

How does a shipowner prepare itself to be a part of the sustainable logistic chain ?



Bengt Meuller

- 1 Short on Wagenborg
- 2 Market, Capacity and Finance
- 3 Regulations and Fuel
- 4 Sustainability and ESG strategy
- 5 Opportunities



Wagenborg in figures

Commercial fleet

177 vessels

The worlds largest MPP fleet
in 2,000-20,000 ton DWT



Net turnover

965 million

In Euros

CO2 reduction Scope 1 and
2 GHG emissions

26,0%

Compared to baseyear
2008

Headcount worldwide
2.568 employees



Total shipped volume 2022

~31,8 million ton

Annual sailed nautical miles

~ 6.0 million

296x around the world

Contract coverage

60 %

Global presence

Business in

45+ countries

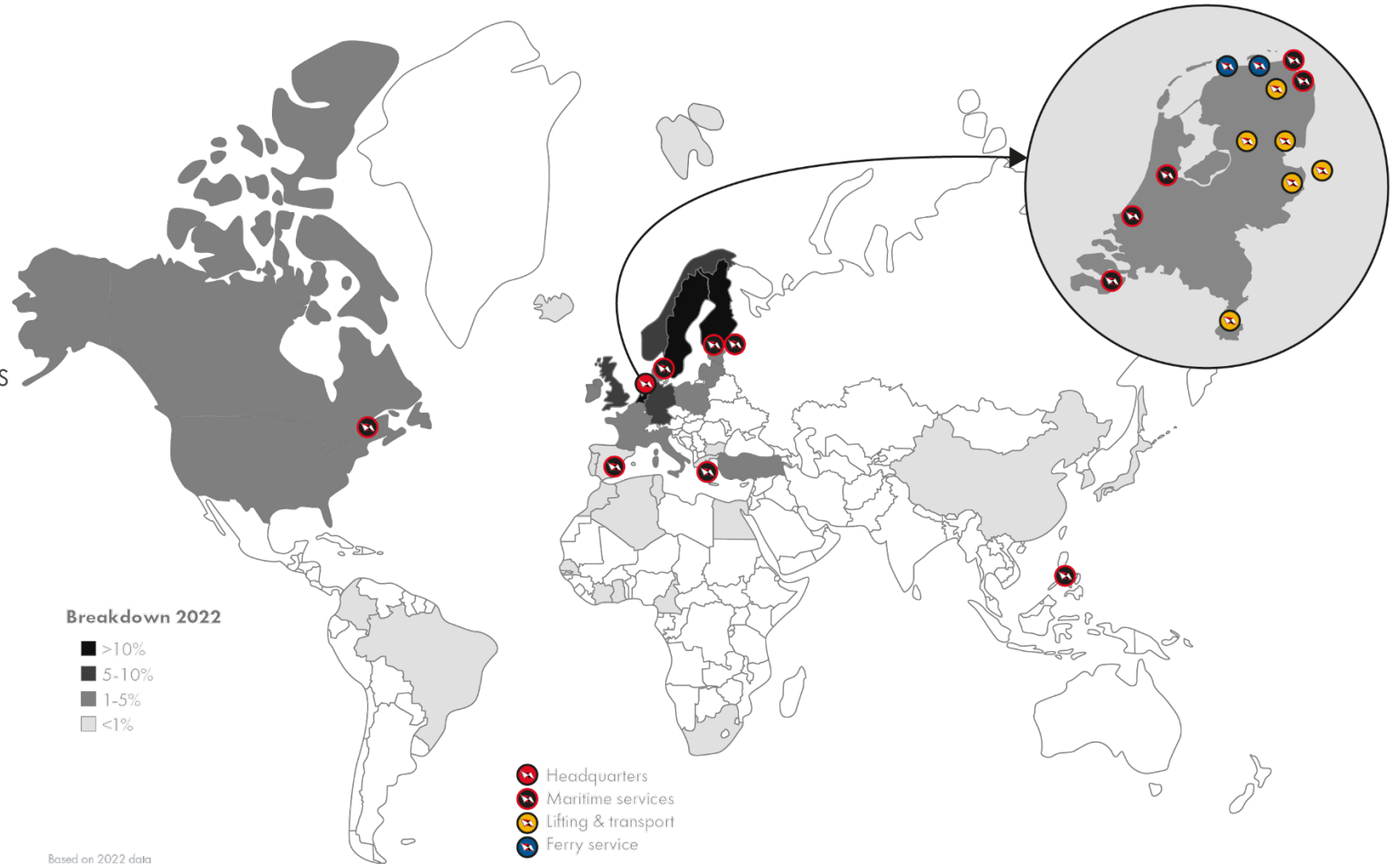
Our global services are managed from the headquarters in Delfzijl, the Netherlands and branche offices in Canada, Sweden, Finland, Spain, Germany, Greece, Saint Petersburg and the Philippines.

In addition, logistic services regarding ports & terminals, offshore, towage, Ferry services, heavy lifting & transport and Shipyards are managed from locations in the Netherlands.

Breakdown 2022



Based on 2022 data

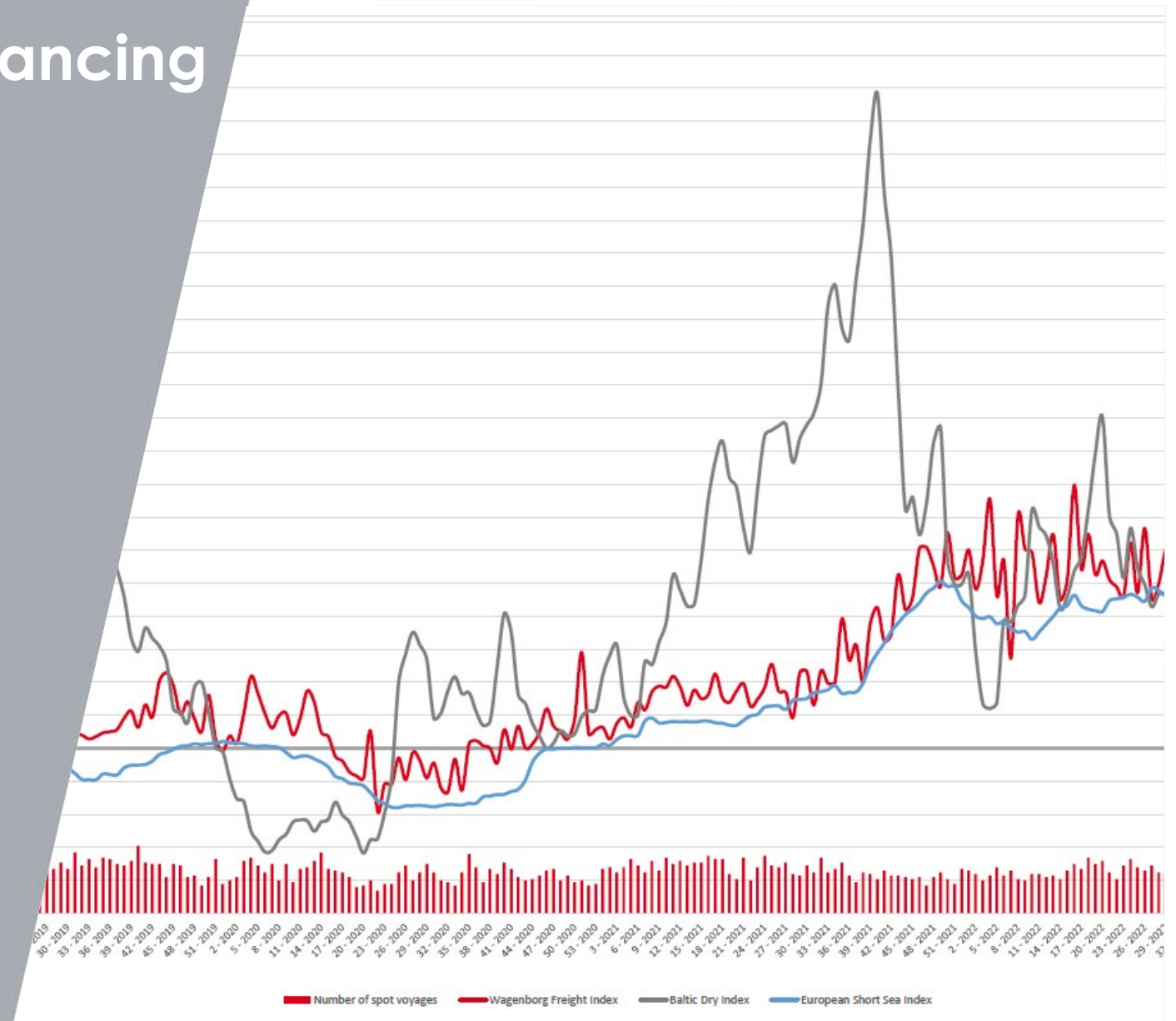


Market, Capacity and Financing

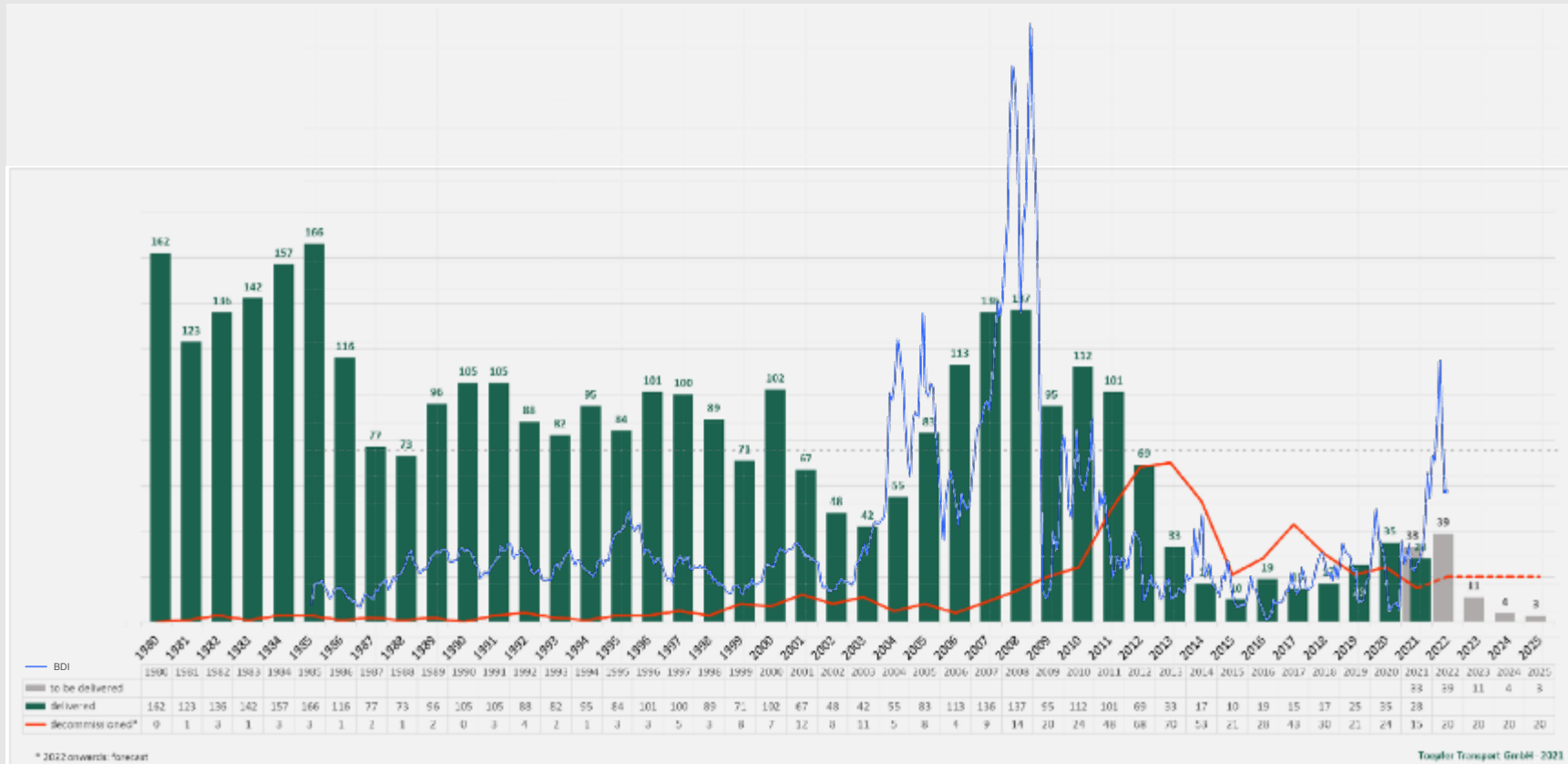
.....
Market

.....
Capacity

.....
Financing

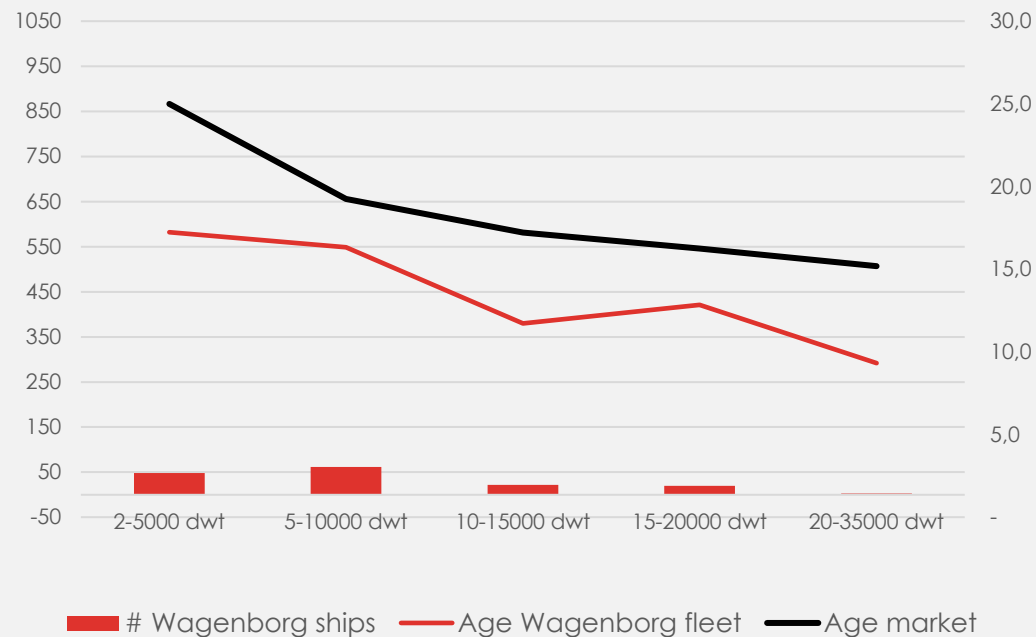


Dry-bulk shipping cycle



Shortsea fleet capacity

Wagenborg and Market average age (per DWT segments)



Source: Drewry April 2020 - Multipurpose Shipping Forecaster & Annual Review 2020/2021

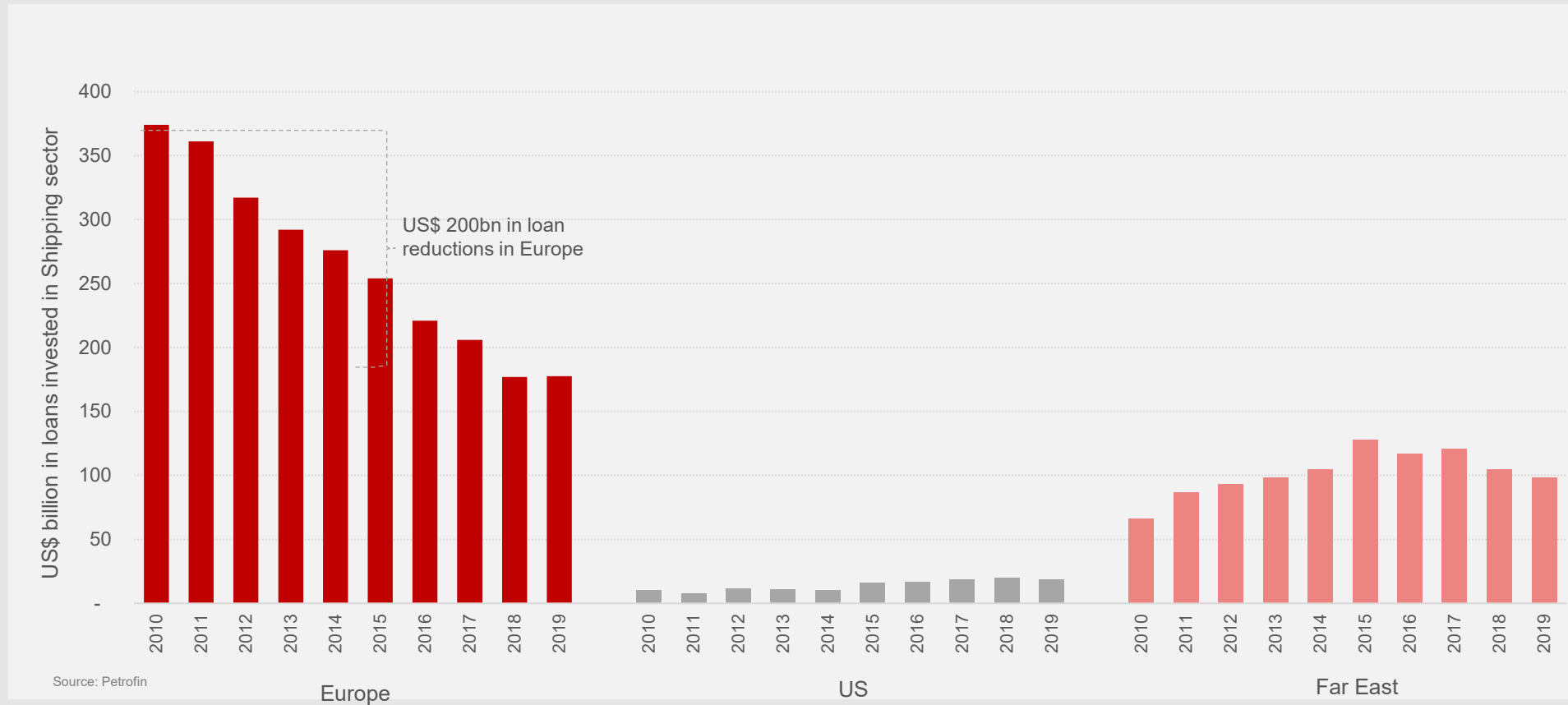
© Royal Wagenborg

Fleet Age distribution (trading):

Age	No. Of Ships	DWAT cum.	DWAT rel. trading
0-4	120	802.897	5,96%
5-9	148	764.339	5,67%
10-14	575	3.271.315	24,27%
15-19	329	1.726.078	12,81%
20-24	406	2.030.199	15,06%
25-29	411	1.680.089	12,46%
30-34	360	1.327.916	9,85%
35-40	438	1.467.548	10,89%
40-44	119	408.270	3,03%
Total fleet	2906	13.478.651	100,00%

Source: Toepfer

Refinancing options more likely from outside traditional bank group



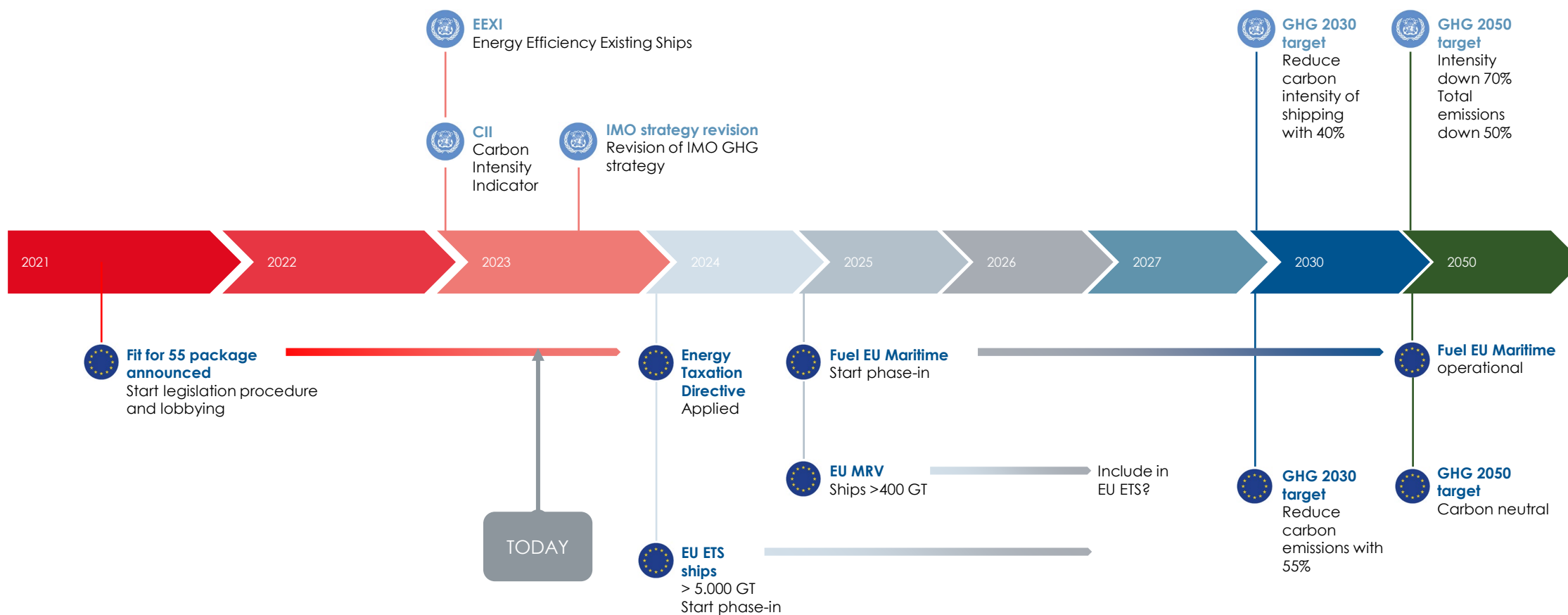
Rules ,Regulations and Fuel

.....
EU-ETS and IMO
.....

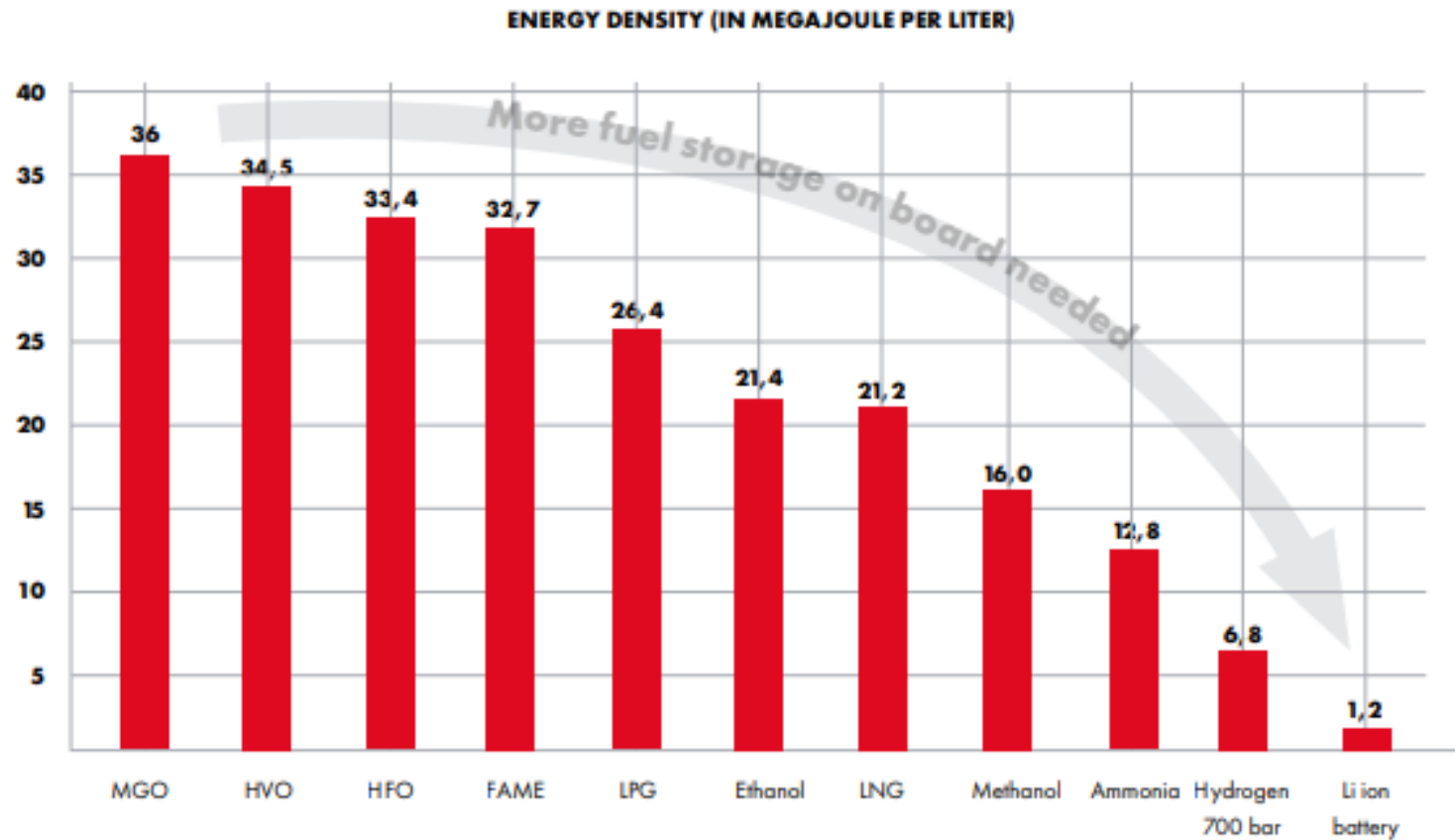
Fuel options
.....



Timeline introduction IMO regulations and EU regulations



Higher bunker capacity per Megajoule a challenge



Sustainability & ESG strategy

Our purpose is to make our business more sustainable every day for present and future generations

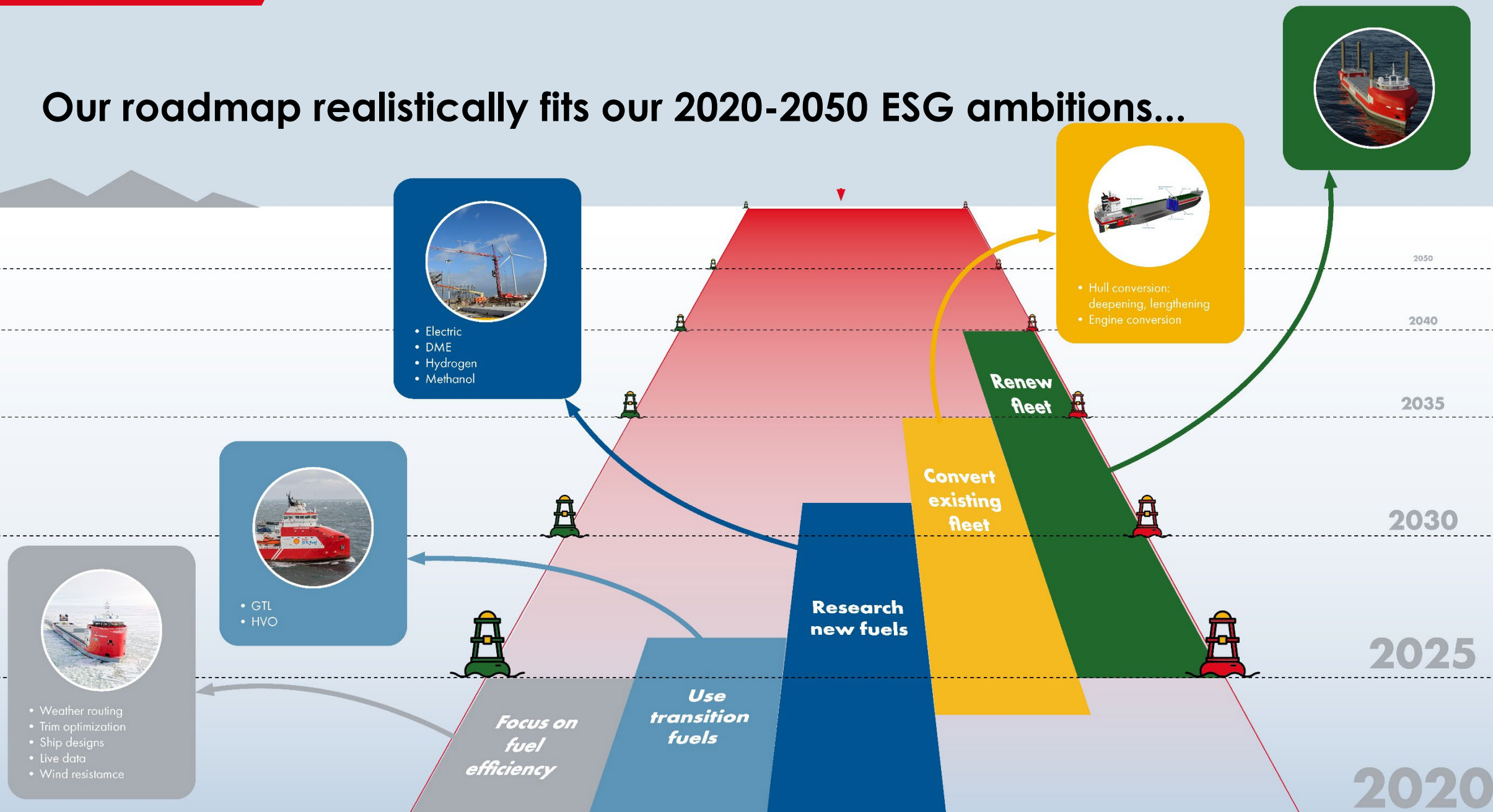


Different business requires different solutions



DEEP SEA SHIPPING

Our roadmap realistically fits our 2020-2050 ESG ambitions...



EasyMax, our first, early-age “prepared for” design.



Challenges

Fuel supply

Fuel infrastructure

Rules and regulations

Financing

Short term commitment

Uncertain market

Technical solutions

Opportunities

High cargo volumes for many years

Join forces to create optimal solutions

Commitment over longer period

Partnership

Challenges

Fuel supply

Fuel infrastructure

Rules and regulations

Financing

Short term commitment

Uncertain market

Technical solutions

Opportunities

High cargo volumes for many years

Join forces to create optimal solutions

Commitment over longer period

Partnership

Challenges

Fuel supply

Fuel infrastructure

Rules and regulations

Financing

Short term commitment

Uncertain market

Technical solutions

Opportunities

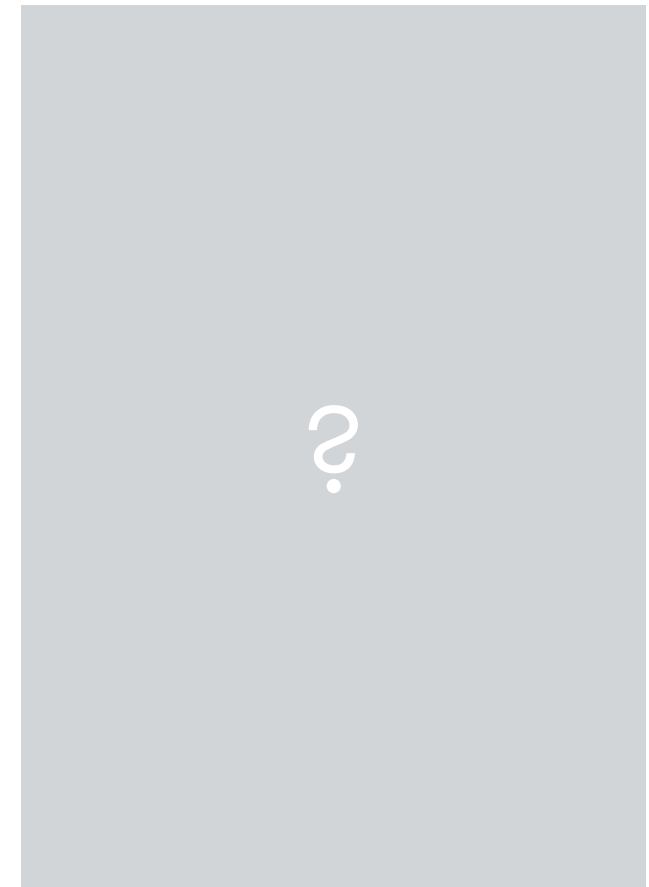
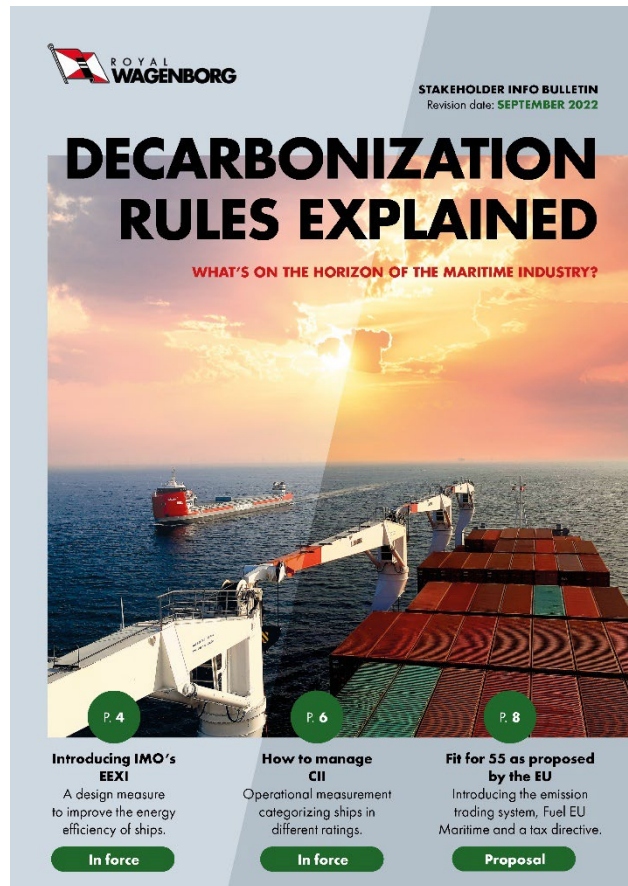
High cargo volumes for many years

Join forces to create optimal solutions

Commitment over longer period

Partnership

More information always on www.wagenborg.com/sustainability



Thanks

